



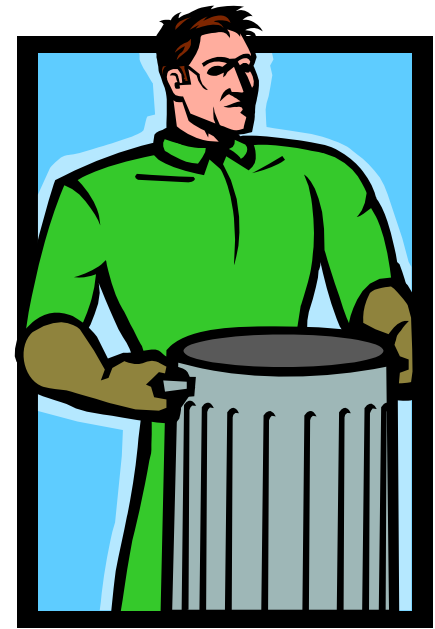
# VERNON'S TOP TEN DOs AND DON'Ts FOR SALTAIRE GARBAGE COLLECTION



medicine, etc.)

**DO Recycle:** The Village of Saltaire is a recycling community, BUT we collect for recycling ONLY the following products:

- Plastic jugs and bottles (from food, drink, detergent, bleach, shampoo, etc.) with a  or  symbol on the bottom of the container. (All other plastic containers go in regular household garbage)
- Metal cans, glass bottles and jars (from food or drink,



**DO** put your recyclables in the specially designated Recycling Can, but **DO NOT PUT A BAG** in the can. It only slows down the collection process. Place items loose in the Recycling Can. (Recycling Cans are available for \$25 per can. Contact the Village Office.)

**DO** use our small battery recycling can located in the Security Office on Bay Prom. All AAA through D batteries should be deposited in this can for recycling.

**DO** tie all household refuse securely in a plastic bag. An untied or loosely tied bag slows the collection process and can cause garbage to be spilled on the walk. **WE WILL NOT PICK UP ANY UNBAGGED, UNTIED REFUSE.**



**DO** put all plastic bags in a garbage can or enclosure that can be securely closed against animals. There are a number of animal species that **WILL** get into garbage cans if not securely fastened with either handle locks, bungee cords or **BOTH**.

**DO** break down, flatten and tie cardboard boxes into pieces no larger than 24" x 30". **DO** bundle or tie all newspapers, magazines, catalogues, etc., but **DO NOT** place these items in a container.

**DO** place Junk Items into one separate pail of maximum size of 20 gallons. Items should be placed loosely in the pail so they can be dumped directly into the truck. For anything larger, you should contact the Village carter Barry Wetherall to remove them.

**Examples of Junk Items are:** Paint and oil cans, ceramics, light bulbs, mirrors, windowpanes, broken glass, nails, metal utensils, razor blades, steel wool, plastic flowerpots, Styrofoam packing material, used fire extinguishers, cushions, pillows, drapes, etc.

**DO** give our garbage collection trucks the right of way. The drivers must negotiate our narrow walks, often while in reverse and always keeping an eye out for small children and bicycles. Please give the right of way to a pick-up truck that is on the same walk; that is, proceed to the closet ramp and allow the truck to pass.

**DO** have your trash ready for pick-up by 6:00 am on the designated collection day. We get an early start in order to speed up collection, and cannot go back for trash that is put out late.



**DO** have a safe and enjoyable summer!

**Summer Refuse Collection Schedule**  
**Trash & Wrap: Mondays and Thursdays**  
**Junk & Brush: Thursdays Only**

**Holiday Schedule: Independence Day: Tues. July 5; Labor Day: Thurs. Sept. 1 & Tues. Sept. 6**  
**Mondays-Only collection resumes September 12**