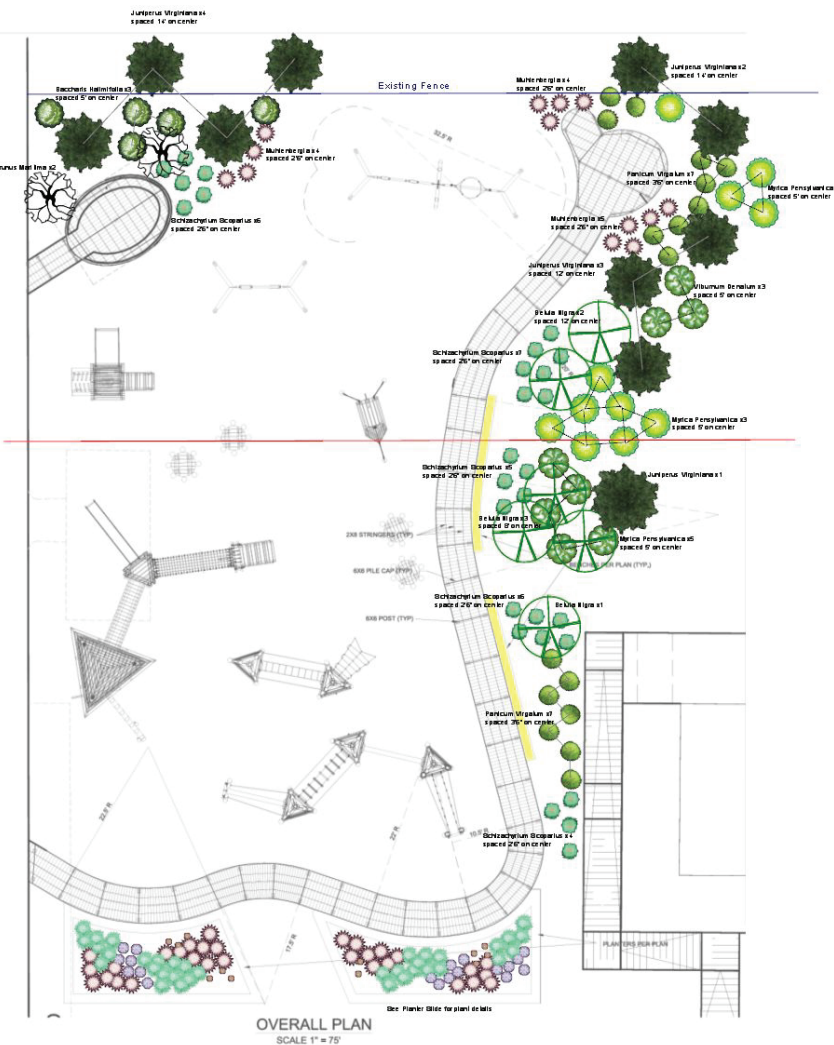
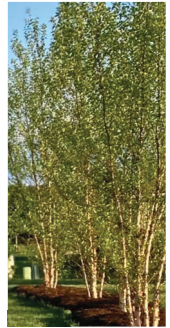


Landscape Plan



1.



2.



3.



4.



5.



6.



7.



8.



9.

TREES for screening and shade

- 1. EASTERN RED CEDAR *Juniperus Virginiana**
- 2. RIVER BIRCH *Betula Nigra**
- 3. BEACH PLUM *Prunus Maritima**

SHRUBS for structure

- 4. N. BAYBERRY *Myrica Pensylvanica**
- 5. GROUNDSEL *Baccharis Halimifolia**
- 6. INKBERRY *Ilex glabra**

GRASSES/ Perennials for texture

- 7. SWITCHGRASS *Panicum virgatum**
- 8. LITTLE BLUESTEM *Schizachyrium scoparium**
- 9. DEER GRASS *Muhlenbergia**

*Asterisk symbol indicates native plant

Bid Opening March 24, 2024 @ 11am

Contractor Name: Bid Results

PLAYGROUND PARK LANDSCAPING

	Approximate		Quintal Contracting		LoDuca Associates	
	Estimated Quantity	Size of Planting	Unit Price	Bid Price	Unit Price	Bid Price
MOBILIZATION						
Performance, Payment and Maintenance Bonds Are NOT Required for this Project, pursuant to the Bid Specifications)	Lump Sum	N/A	N/A	\$8,000	N/A	\$15,369
PLANTERS						
Furnish & Install all Perennial Plantings pursuant to Concept Plan - Estimated	Lump Sum	1 gallon	N/A	\$2,925	N/A	\$12,269
TREES AND SHRUBS OUTSIDE PLANTERS						
River Birch (Betula Nigra)	5	10 to 12 Ft	\$975	\$4,875	\$1,609	\$8,045
Eastern Red Cedar (Juniperus Virginiana)	9	7 to 8 Ft	\$725	\$6,525	\$1,201	\$10,809
Beach Plum (Prunus Maritima)	2	5 to 6 Ft	\$350	\$700	\$324	\$648
N. Bayberry (Myrica Pensylvanica)	12	5 gallon	\$150	\$1,800	\$260	\$3,120
Groundsel (Baccharis Halimifolia)	5	7 gallon	\$250	\$1,250	\$348	\$1,740
Inkberry (Ilex Glabra)	8	5 gallon	\$150	\$1,200	\$301	\$2,408
Little Bluestem (Schizachyrium Scoparius)	30	2 gallon	\$60	\$1,800	\$91	\$2,730
Deer Grass (Muhlenbergia)	14	1 gallon	\$40	\$560	\$82	\$1,148
Switchgrass ((Panicum Virgatum)	20	2 gallon	\$60	\$1,200	\$81	\$1,620
TOTAL EXTENDED BID	NA	NA	NA	\$30,835	NA	\$59,906